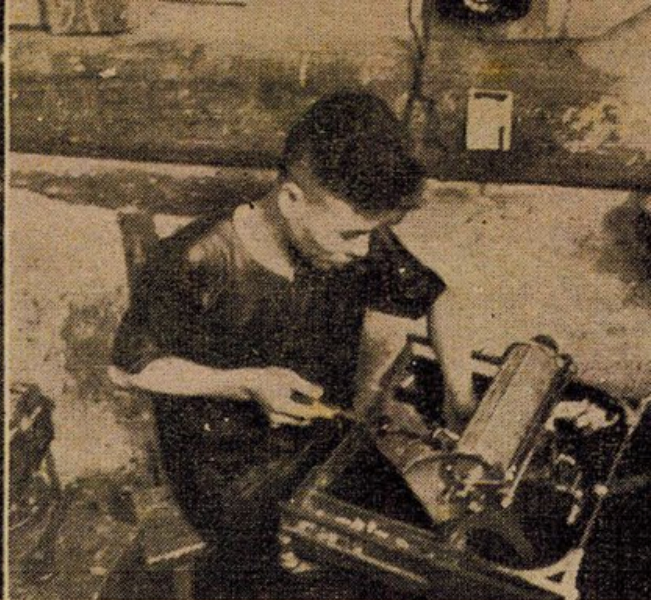


Typewriters: Manufacturing Plant



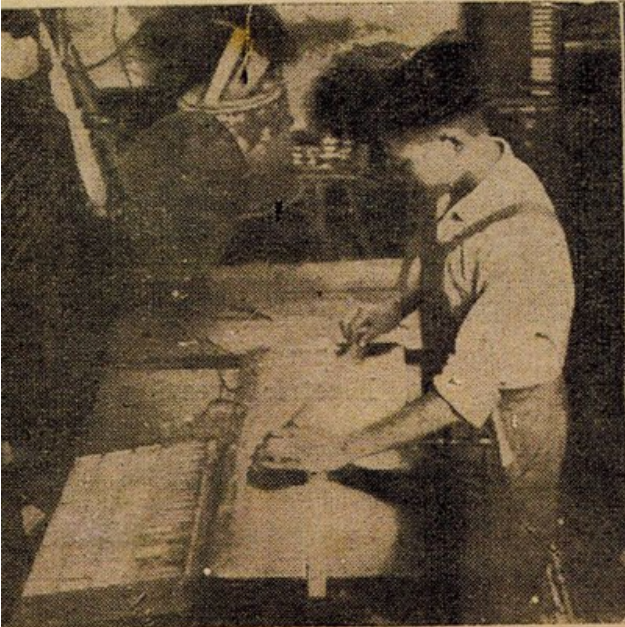
◦ 形 情 機 造 體 全

The main part of the factory.



◦ 作 工 字 排 機 裝

Fitting the type-writer.



◦ 字 磨

Adjusting the letters.



模 鋼 揀

Checking the models.

TITLE

Commercial Press Chinese typewriter manufacturing plant

DATE

1927

CREATOR

Shangye zazhi 商业杂志

PUBLISHER

Shangye zazhi

RIGHTS

Shangye zazhi. Public Domain.

DESCRIPTION

The company dedicated a substantial financial investment to its new Chinese typewriter division, which occupied a reported forty rooms. Employing more than three hundred workers, and entailing some two hundred pieces of equipment, the process of building the new machine was divided among a variety of roles: melting lead to be used for character slugs, casting the character slugs, error-checking the tray bed character table, fitting the machine chassis, setting character slugs in their designated locations on the tray bed, and more.
